

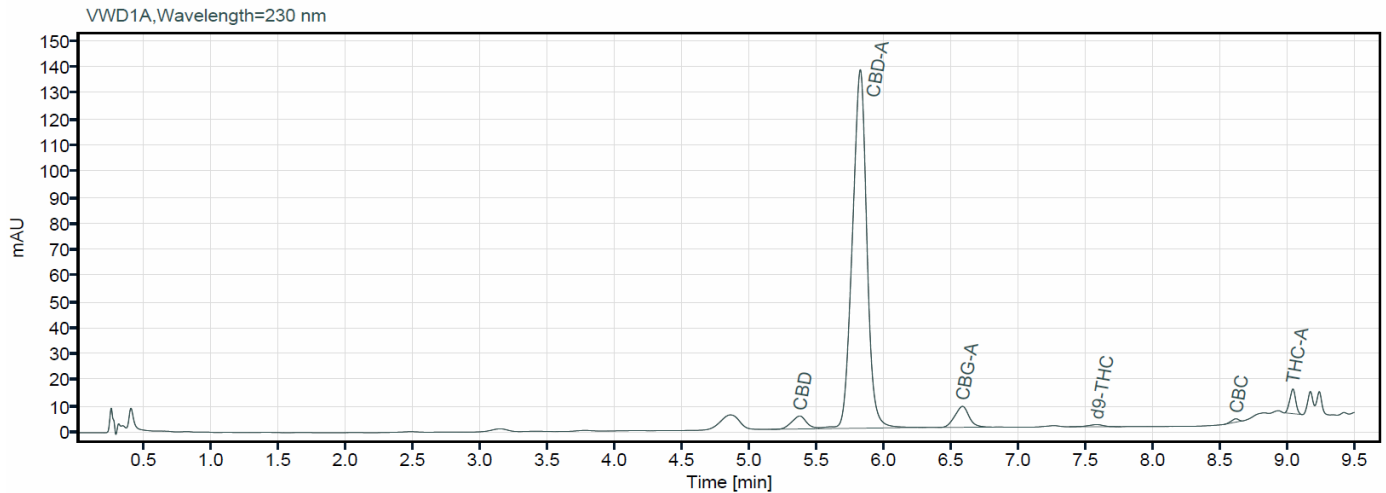
Certificate of Analysis



Growing with Science

Customer RRP GmbH (Johnny CBD)
Sample name Kickl Blue Cheese
Sample material Flower
Date of analysis 05.02.2024
Analysis method HPLC

Altus Biolabs GmbH
Dr.Bohrgasse 2-8/13/1
A-1030 Wien
office@altus-biolabs.com
www.hanfpest.at/



Compound	RT (min)	Concentration (mass %)	
d9-THC	d9-Tetrahydrocannabinol	7.583	0.14
d8-THC	d8-Tetrahydrocannabinol	-	0.00
THC-A	Tetrahydrocannabinolic acid	9.043	0.23
CBD	Cannabidiol	5.372	0.73
CBD-A	Cannabidiolic acid	5.823	11.06
CBG	Cannabigerol	-	0.00
CBG-A	Cannabigerolic acid	6.589	0.18
THCV	Tetrahydrocannabivarin	-	0.00
CBN	Cannabinol	-	0.00
CBC	Cannabichromene	8.619	0.07
CBDV	Cannabidivarin	-	0.00
CBDV-A	Cannabidivarinic acid	-	0.00
9S-HHC	9s-Hexahydrocannabinol	-	0.00
9R-HHC	9r-Hexahydrocannabinol	-	0.00

Do not reproduce this report except in full without the written consent of the laboratory.



SYSTEMZERTIFIZIERT

ISO 9001:2015

NR.30577/0



Altus Biolabs GmbH
Dr. Bohr-Gasse 2-8/13/1
1030 Wien
Tel: +43 660 997 06 29
E-Mail: office@altus-biolabs.com
Web: www.hanfpest.at

Bertram Hausl MSc

Scientific Director